



It's time to make your pledge.



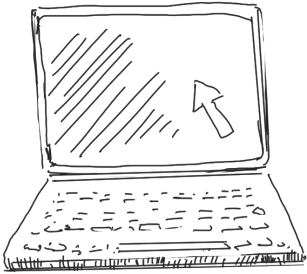
Maricela Garcia
U.S. Postal Service

- \$10** purchases one book for a child, improving literacy skills.
- \$25** funds one night of safe shelter for someone without a permanent residence.
- \$40** supplies a dozen baseballs for children in low-income communities.
- \$50** delivers 10 first aid kits to hurricane survivors.
- \$100** supplies a family overseas with a dairy cow, offering food security and a source of income.



Choose your cause and *Show Some Love* today.
opm.gov/ShowSomeLoveCFC

How to GIVE ONLINE



- 1. CLICK DONATE** on your local CFC website or visit opm.gov/ShowSomeLoveCFC.
- 2. CREATE AN ACCOUNT** or log in to your existing account.
- 3. COMPLETE YOUR PROFILE:**
 - a. ENTER THE ZIP CODE** of your office to access the correct list of units/offices.

Our office zip code is: _____
 - b. ENTER YOUR CFC UNIT CODE** to automatically populate the Department/Agency/Office selections.

Our CFC Unit Code is: _____
- 4. SEARCH FOR CHARITIES** you want to support.
- 5. MAKE YOUR PLEDGE** by selecting your designated charities and allocating funds or volunteer hours.